

# Guidelines for Preparing Specifications

Generally, formal specifications for condensate drain systems are included in the MECHANICAL division of the document and include the following: written specifications, drawings, schedules and notes. The following pages define the information required for specifying the CostGard™ Condensate Drain Seal and illustrate how this information can be fitted into a more formal specification.

## DIVISION 15 – MECHANICAL

### SECTION 15010 - BASIC REQUIREMENTS

#### PART 1 GENERAL

##### 1.6 Contract Documents

- Specification – determine the nature and setting of the several materials,
- Drawings – establish the quantities, dimensions and details,
- Schedules - give the performance characteristics

### SECTION 15410 – PLUMBING PIPING

#### PART 1 GENERAL

##### 1.3 REFERENCES

#### SUBMITTALS

Per Sections 15010

Product Data: Provide data on pipe materials, pipe fittings, valves, and accessories.  
Provide manufacturers catalog information. Indicate valve date and ratings

### SECTION 15790 – AIR COILS

#### PART 1 GENERAL

#### SUBMITTALS

- Submit shop drawings under provisions of Section 15010
- Submit shop drawings indicating coil and frame configurations, dimensions, material, rows connections, and rough-in dimensions.
- Submit product data under provisions of Section 15010

##### 2.01 CHILLED AND HOT WATER COILS

- A. Water coil capacities, . . .
- B. Chilled and hot water coils . . . extended surfaces . . .
- C. Coil headers and connections . . .
- D. Coils shall be designed and certified . . .
- E. Condensate from chilled cooling coils shall be piped to the nearest convenient floor drain. The pipe size shall be 1” minimum diameter, insulated as specified for chilled water piping. The condensate drain system shall include the CostGard™ Condensate Drain Seal, manufactured by Trent Technologies. Refer to M2.1 for details, below.

**HVAC UNIT SCHEDULE**

| UNIT                               | FAN        |     | COILS-ΔP                     |                        |                        | FILTER-ΔP    |              | STATIC PRESSURES |                    |
|------------------------------------|------------|-----|------------------------------|------------------------|------------------------|--------------|--------------|------------------|--------------------|
|                                    | ARFLOW CFM | RPM | TOTAL STATIC PRESSURE-IN W/C | COOLING COIL-ΔP IN W/C | HEATING COIL-ΔP IN W/C | CLEAN IN W/C | DIRTY IN W/C | DRAIN PAN IN W/C | SUPPLY DUCT IN W/C |
| DRAW-THROUGH AIR HANDLERS          |            |     |                              |                        |                        |              |              |                  |                    |
| AHU 1                              |            |     |                              |                        |                        |              |              |                  |                    |
| AHU 2                              |            |     |                              |                        |                        |              |              |                  |                    |
| AHU 3                              |            |     |                              |                        |                        |              |              |                  |                    |
| AHU 4                              |            |     |                              |                        |                        |              |              |                  |                    |
| BLOW-THROUGH AIR HANDLERS          |            |     |                              |                        |                        |              |              |                  |                    |
| AHU 5                              |            |     |                              |                        |                        |              |              |                  |                    |
| AHU 6                              |            |     |                              |                        |                        |              |              |                  |                    |
| AHU 7                              |            |     |                              |                        |                        |              |              |                  |                    |
| AHU 8                              |            |     |                              |                        |                        |              |              |                  |                    |
| UNITARY DRAW-THROUGH ROOFTOP UNITS |            |     |                              |                        |                        |              |              |                  |                    |
| RTU 1                              |            |     |                              |                        |                        |              |              |                  |                    |
| RTU 2                              |            |     |                              |                        |                        |              |              |                  |                    |
| RTU 3                              |            |     |                              |                        |                        |              |              |                  |                    |
| RTU 4                              |            |     |                              |                        |                        |              |              |                  |                    |

NOTE: DESIGN DATA and/or DATA FROM TEST AND BALANCE

**NOTES**

GENERAL

EQUIPMENT

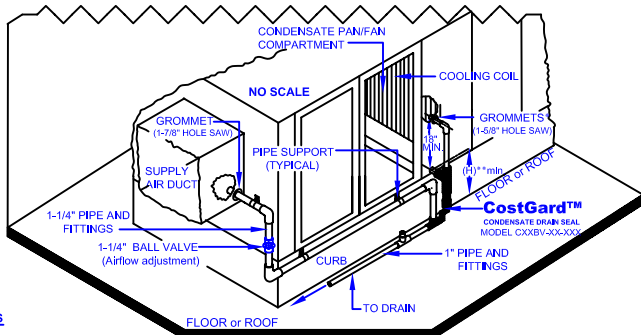
CONDENSATE DRAIN SYSTEM

3.1 FOR EACH AHU/RTU, PROVIDE COSTGARD CONDENSATE DRAIN DEVICE(S), MANUFACTURED BY TRENT TECHNOLOGIES, TYLER TEXAS; PHONE: (903) 509-4843

3.2 PROVIDE RAIL & HOUSEKEEPING PAD (OR CURB) HEIGHT TO ACCOMMODATE THE COSTGARD DRAIN SYSTEM. REFER TO DRAWING M2.1

3.3 ROUTE CONDENSATE DRAIN PIPING SO IT WILL NOT INTERFERE WITH REQUIRED ACCESS TO THE AHUs OR RTUs.

**DRAW-THROUGH AHU**

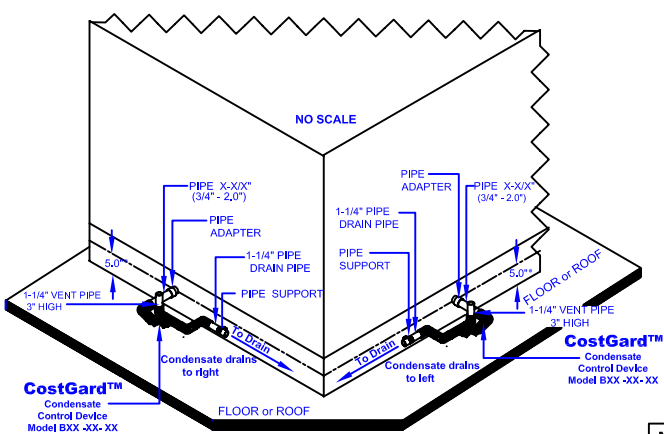


**NOTES**

\*TWO GROMMETS - DOUBLE WALL  
 \*\* (H)min. = MINIMUM HEIGHT REQUIRED BETWEEN FLOOR (OR ROOF) AND CENTERLINE OF CONDENSATE DRAIN CONNECTION =  $2.20 \times P_{pan} + .125 \times D$   
 where, P<sub>pan</sub> = STATIC PRESSURE IN DRAIN PAN COMPARTMENT(REFER TO SCHEDULE ABOVE), AND D = DISTANCE FROM DRAIN SEAL TO DRAIN

M2.1  
1

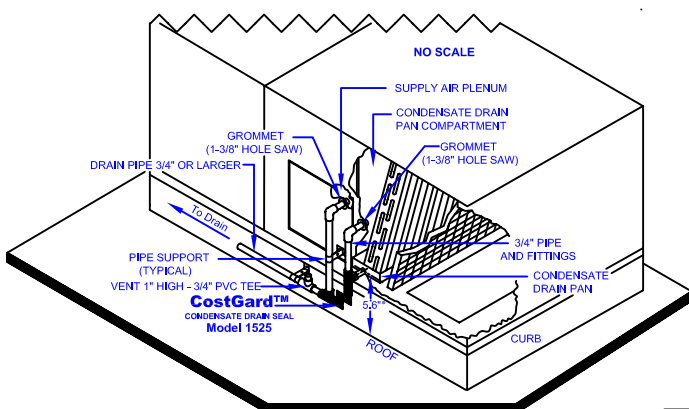
**BLOW-THROUGH AHU**



\*NOTE: MINIMUM HEIGHT REQUIRED BETWEEN FLOOR (OR ROOF) AND CENTERLINE OF CONDENSATE DRAIN CONNECTION =  $5.0' + .125 \times \text{DISTANCE FROM DRAIN CONNECTION TO DRAIN}$

M2.1  
2

**UNITARY DRAW-THROUGH RTU (up to 30 tons)**



\*NOTE: MINIMUM HEIGHT REQUIRED BETWEEN ROOF AND CENTERLINE OF CONDENSATE DRAIN CONNECTION =  $5.6' + .125 \times \text{DISTANCE FROM DRAIN CONNECTION TO ROOF DRAIN}$

M2.1  
3

DRAWINGS, SCHEDULES & NOTES - MECHANICAL

M2.1